



PUERTO  
RICO

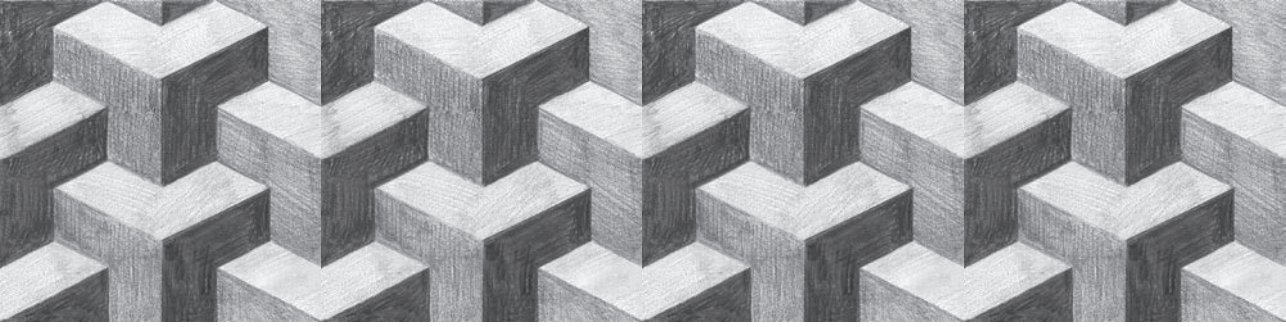
esplorare per riscoprire  
*explore to rediscover*



The  
Stone  
Project



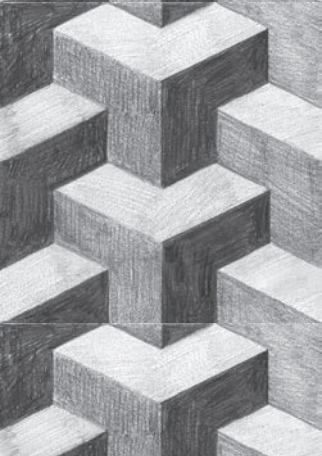
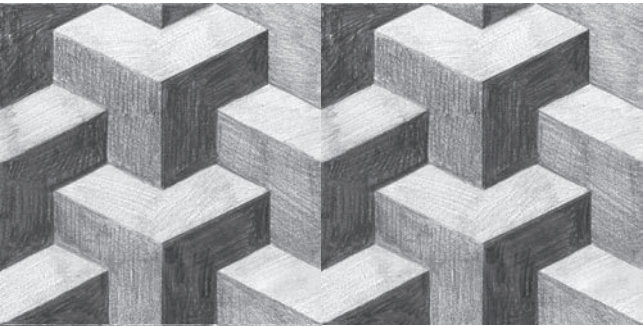
 MIPA



---

## #02

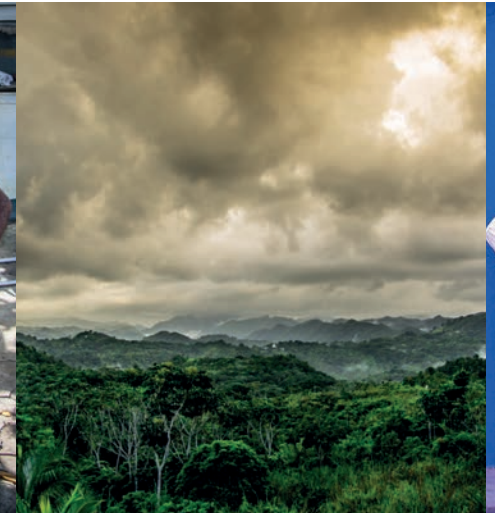
quaderno di progetto  
*project notebook*





Continua la ricerca con nuove scoperte per un nuovo immaginario  
*The research continues with new discoveries for a new set of images*

UNA NUOVA  
COLLEZIONE  
A NEW  
COLLECTION



Il primo viaggio tra i decori cubani ha portato alla creazione di una vera e propria "collezione di ricerca", che è entrata a far parte del già ricco archivio MIPA. Le soddisfazioni ottenute ci hanno stimolati nel proseguire l'inesauribile ricerca ispiratrice all'interno del mondo della decorazione.

*The first journey among Cuban decorations led to the creation of a new "research collection" which became part of the already very comprehensive MIPA archive. The satisfaction obtained pushed us to continuing in this relentless search for inspiration within the decoration world.*

Anche in questo caso siamo rimasti nel Centro America rivolgendo l'attenzione a **Puerto Rico**, un altro paese che nei secoli ha subito forti contaminazioni dagli stili artistici ed architettonici del vecchio mondo, riadattandoli agli stili coloniali.

*Once again we sought inspiration in Central America. This time we turned our focus to **Puerto Rico**, another country that over the years has been crossed and influenced by countless architectural and art styles from the old world, which it re-visited according to colonial style.*

Un tuffo nel colore e nei decori di una terra tutta da scoprire.

*A plunge into the colours and decorations of a country worth discovering.*

La collezione **Puerto Rico** è stata anche il punto di partenza per lo studio e lo sviluppo di nuovi colori dal sapore tutto caraibico.

*The **Puerto Rico** collection was also the springboard to research and develop a new, distinctly Caribbean colour palette.*

MIPA prosegue così la sua voglia di ricerca, di scoperta e di rinnovamento aggiungendo un nuovo tassello alle sue collezioni di graniglia.

*Thus MIPA continues on its quest to research, discover and renew itself by adding a new element to its "Graniglia" collections.*





14 nuovi decori per creare nuovi orizzonti nel mondo della graniglia  
14 new decorations to create new ideas in the world of "graniglia"



INDICE  
PUERTO RICO  
PUERTO RICO  
INDEX



PUERTO RICO  
collezione decori ricerca  
*research decorations' collection*

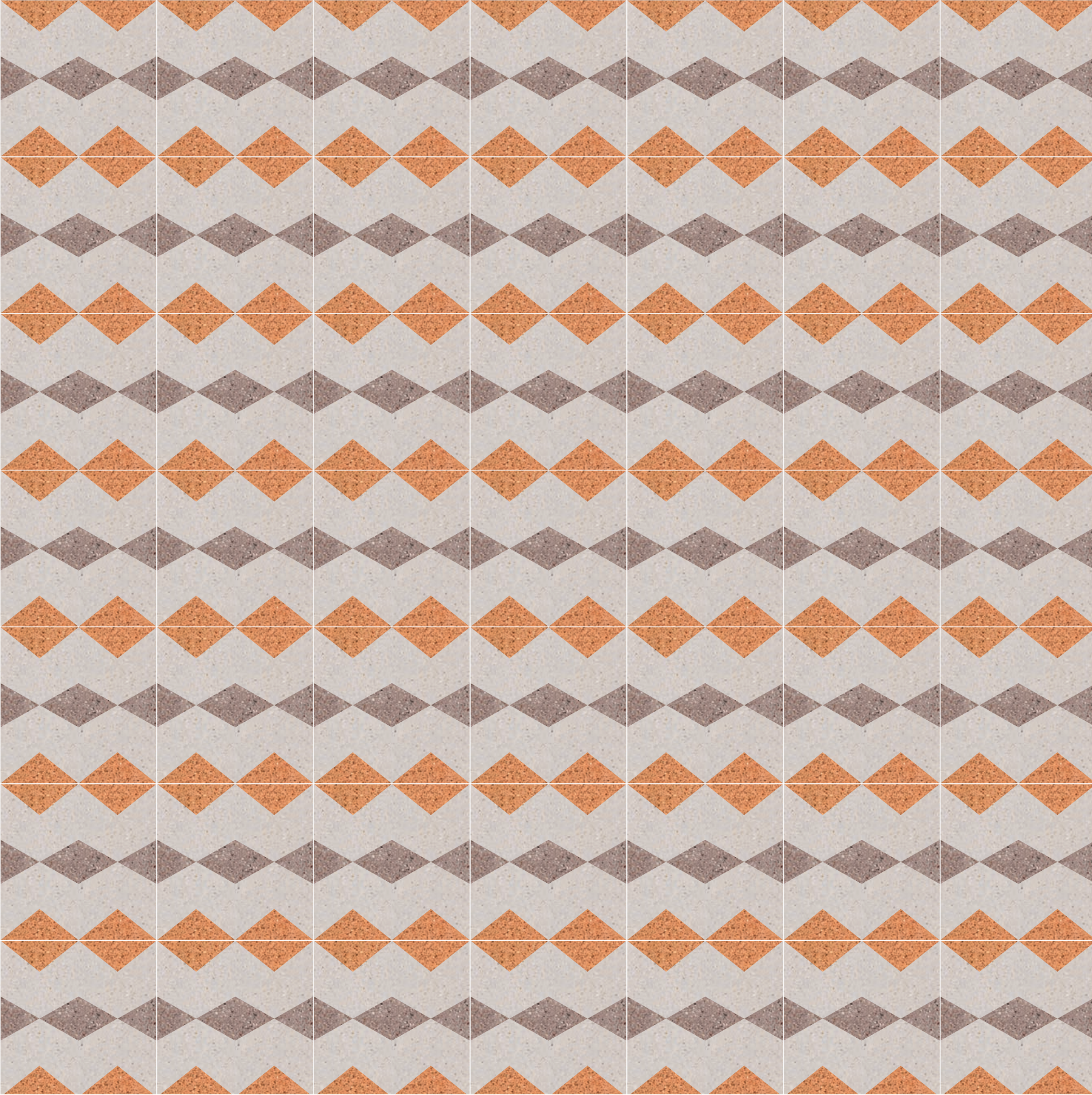
---

La collezione Puerto Rico e le nuove suggestioni per ispirare il vostro immaginario.  
*The Puerto Rico collection and the new suggestions to inspire your imagination*

---

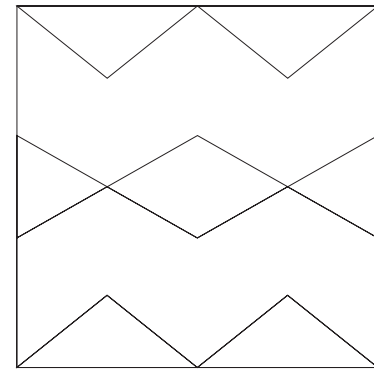
# DECORI PATTERNS





PUERTO RICO  
collezione decori ricerca  
research decorations' collection

# AGUADA

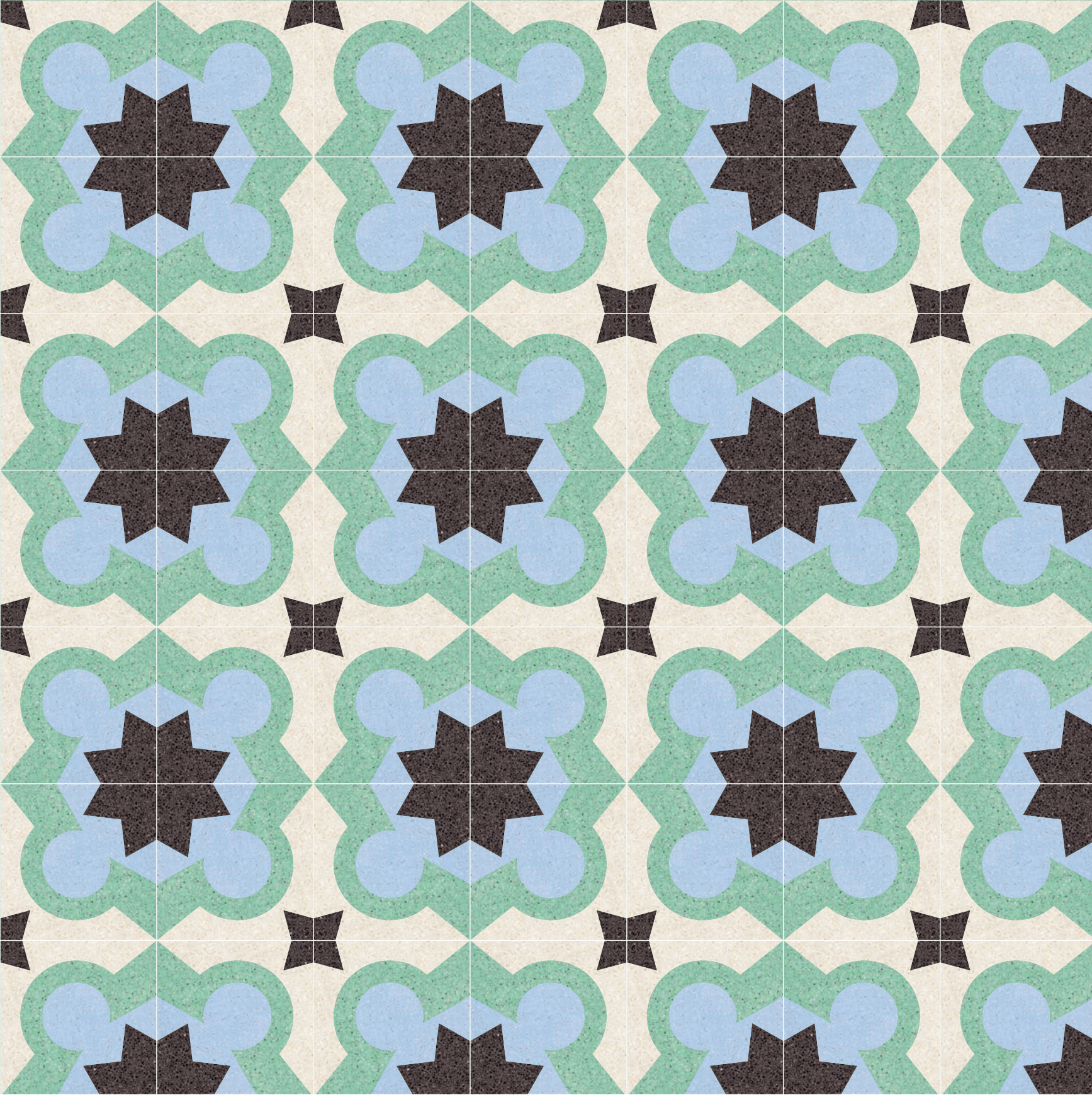


dimensione / size  
20x20 cm

colori / colours  
tortora, ginger, terra



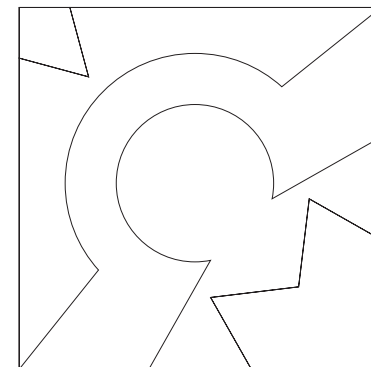




PUERTO RICO  
collezione decori ricerca  
research decorations' collection

# AGUADILLA

10  
11



dimensione / size  
20x20 cm

colori / colours  
avorio, amazzonia, turchino, wengè

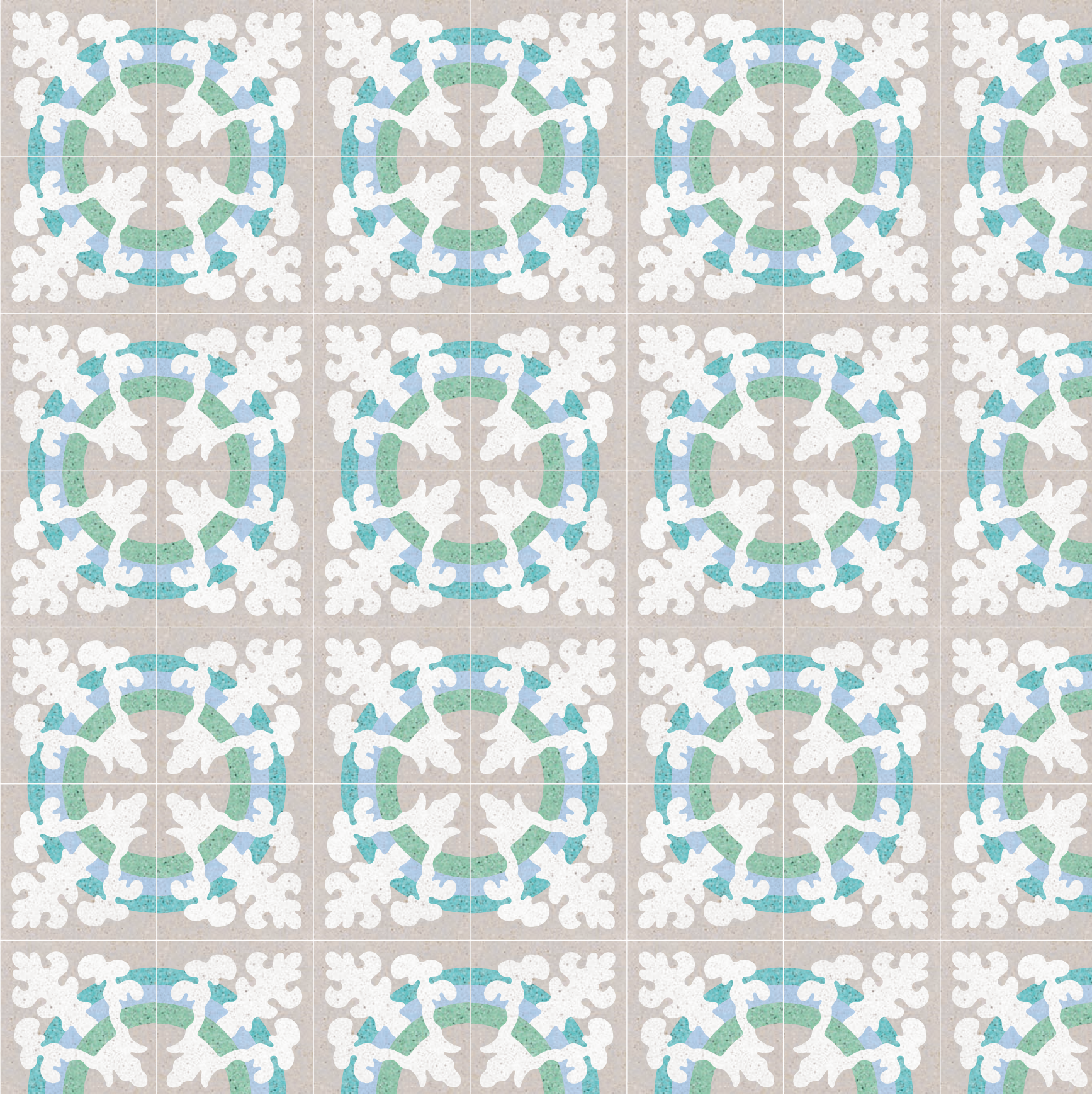






**AGUADILLA / AGUADA**  
avorio, amazzonia, ginger, wengè, pacifico

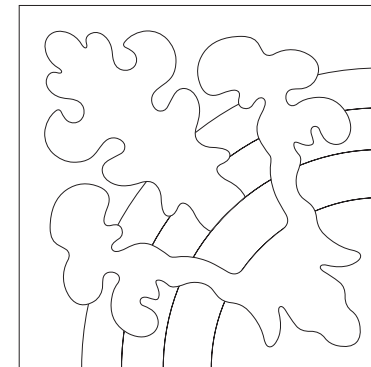




PUERTO RICO  
collezione decori ricerca  
research decorations' collection

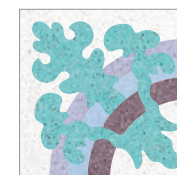
# CAGUAS

14  
15



dimensione / size  
20x20 cm

colori / colours  
bianco cristallo, tortora, pacifico, turchino, amazzonia

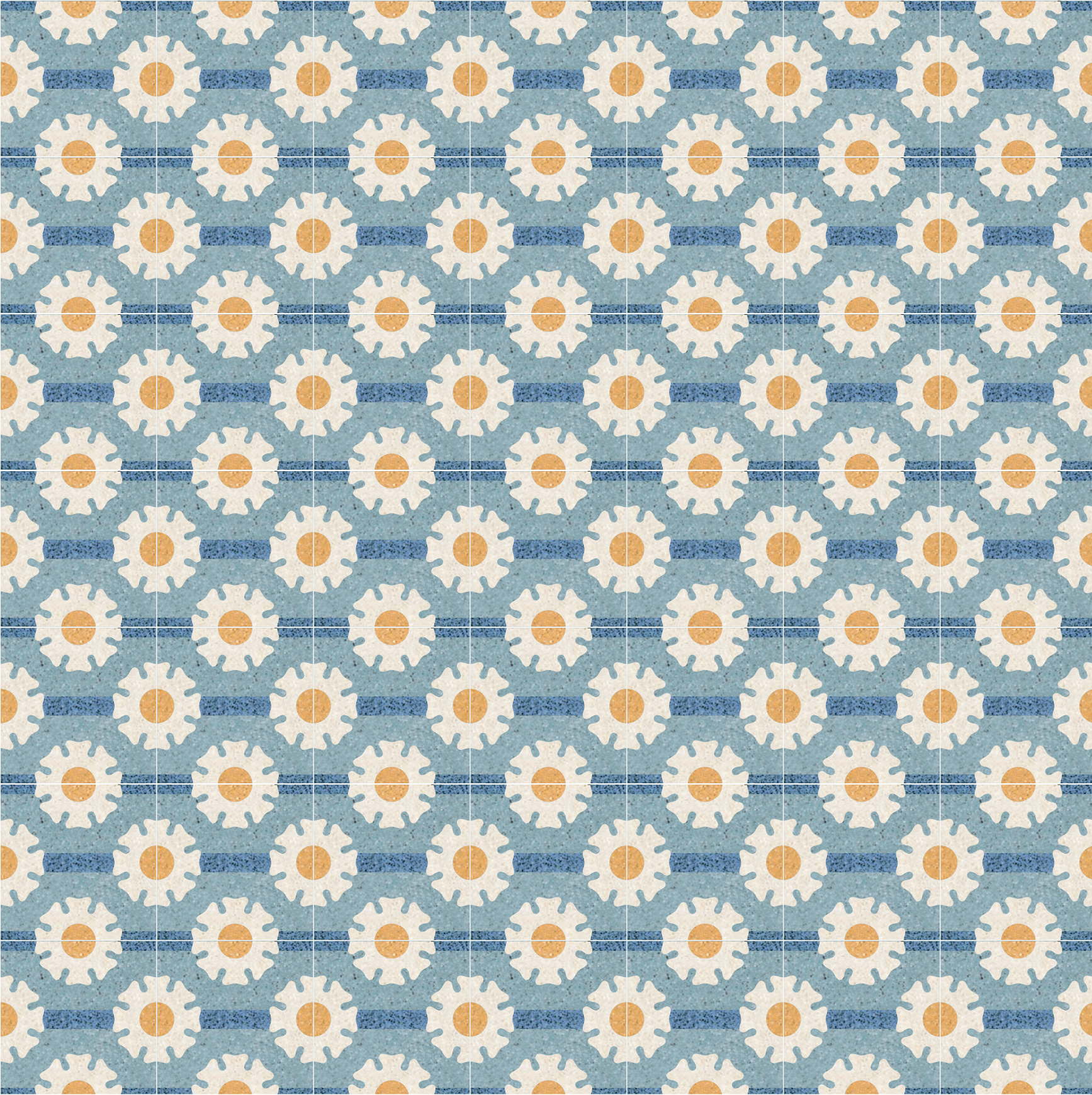






CAGUAS  
kiwi, bianco cristallo, lava, menta, pacifico

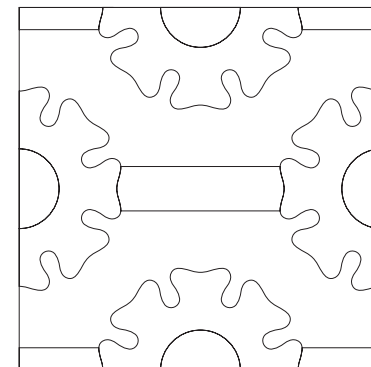




PUERTO RICO  
collezione decori ricerca  
research decorations' collection

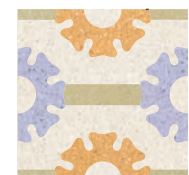
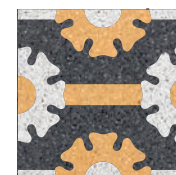
# CAROLINA

18  
19

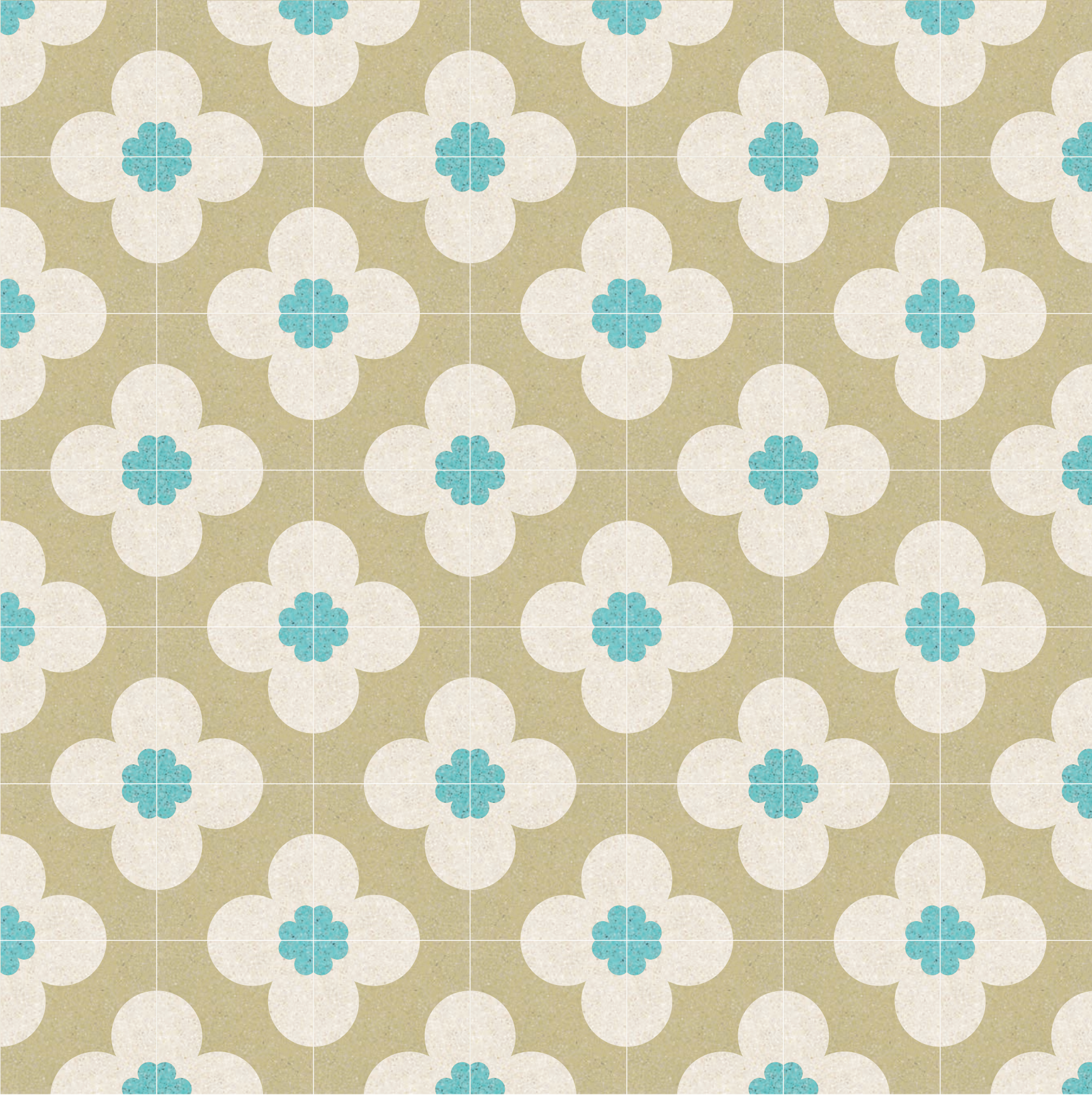


dimensione / size  
20x20 cm

colori / colours  
avorio, giallo oro, blue jeans, carta da zucchero



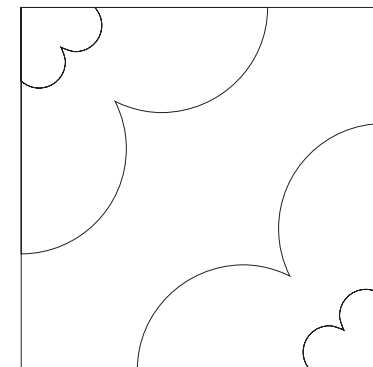




PUERTO RICO  
collezione decori ricerca  
research decorations' collection

# GUANICA

20  
21



dimensione / size  
20x20 cm

colori / colours  
kiwi, pacifico, avorio

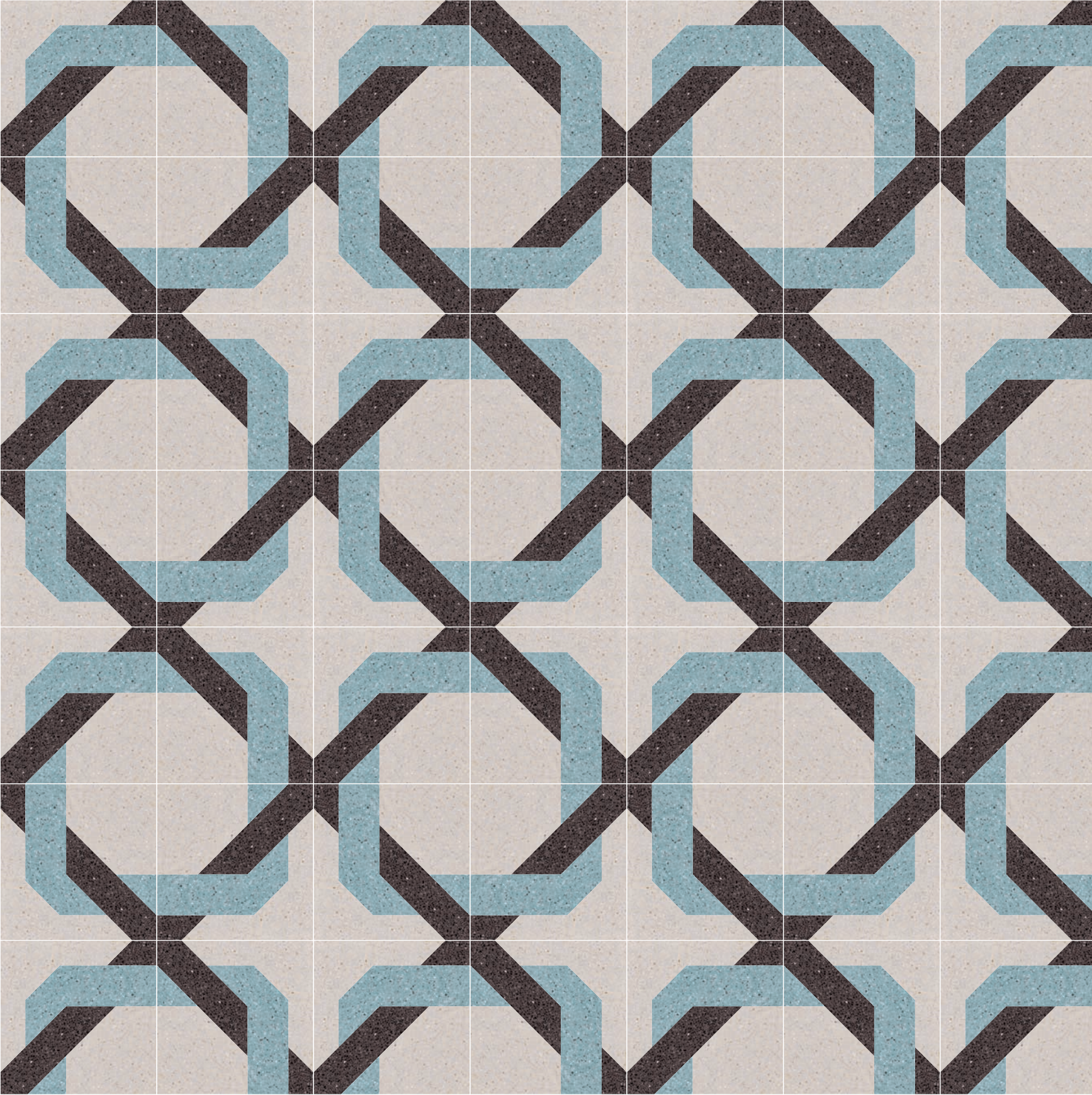






**GUANICA**  
avorio, pacifico, menta

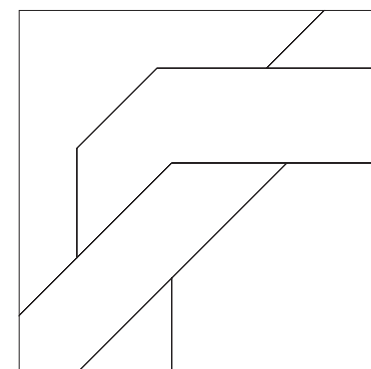




PUERTO RICO  
collezione decori ricerca  
research decorations' collection

# HATILLO

24  
25



dimensione / size  
20x20 cm

colori / colours  
tortora, wengè, carta da zucchero

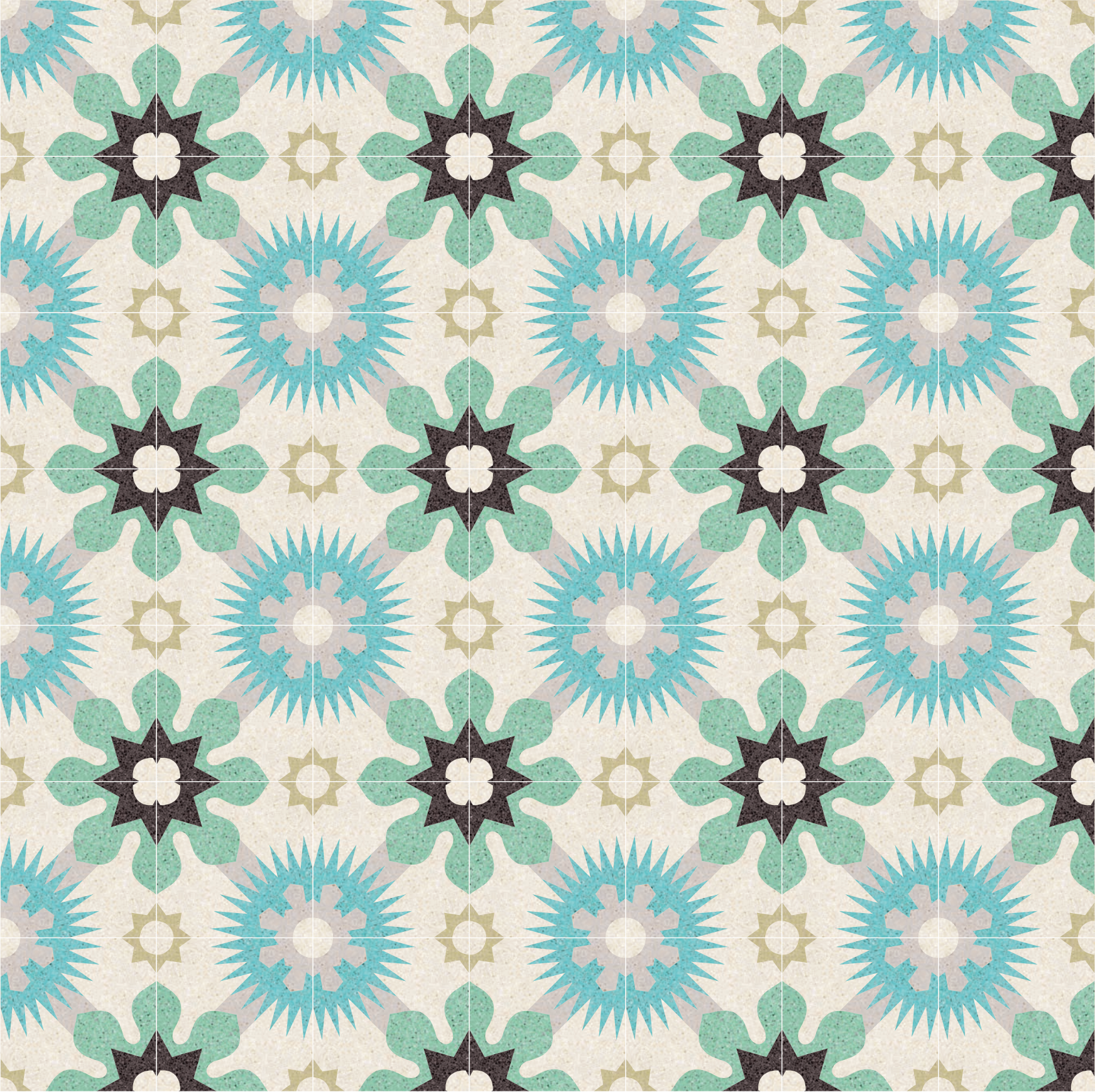






HATILLO / AGUADA / AGUADILLA  
avorio, wengè, pacifico

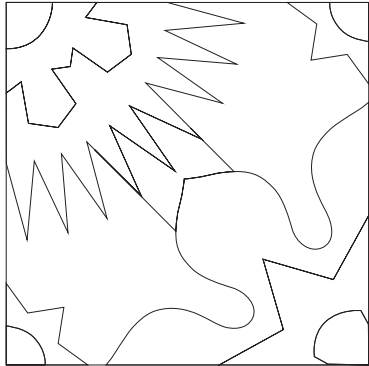




PUERTO RICO  
collezione decori ricerca  
research decorations' collection

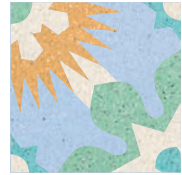
# ISABELA

28  
29



dimensione / size  
20x20 cm

colori / colours  
avorio, pacifico, kiwi, amazzonia, wengè, tortora

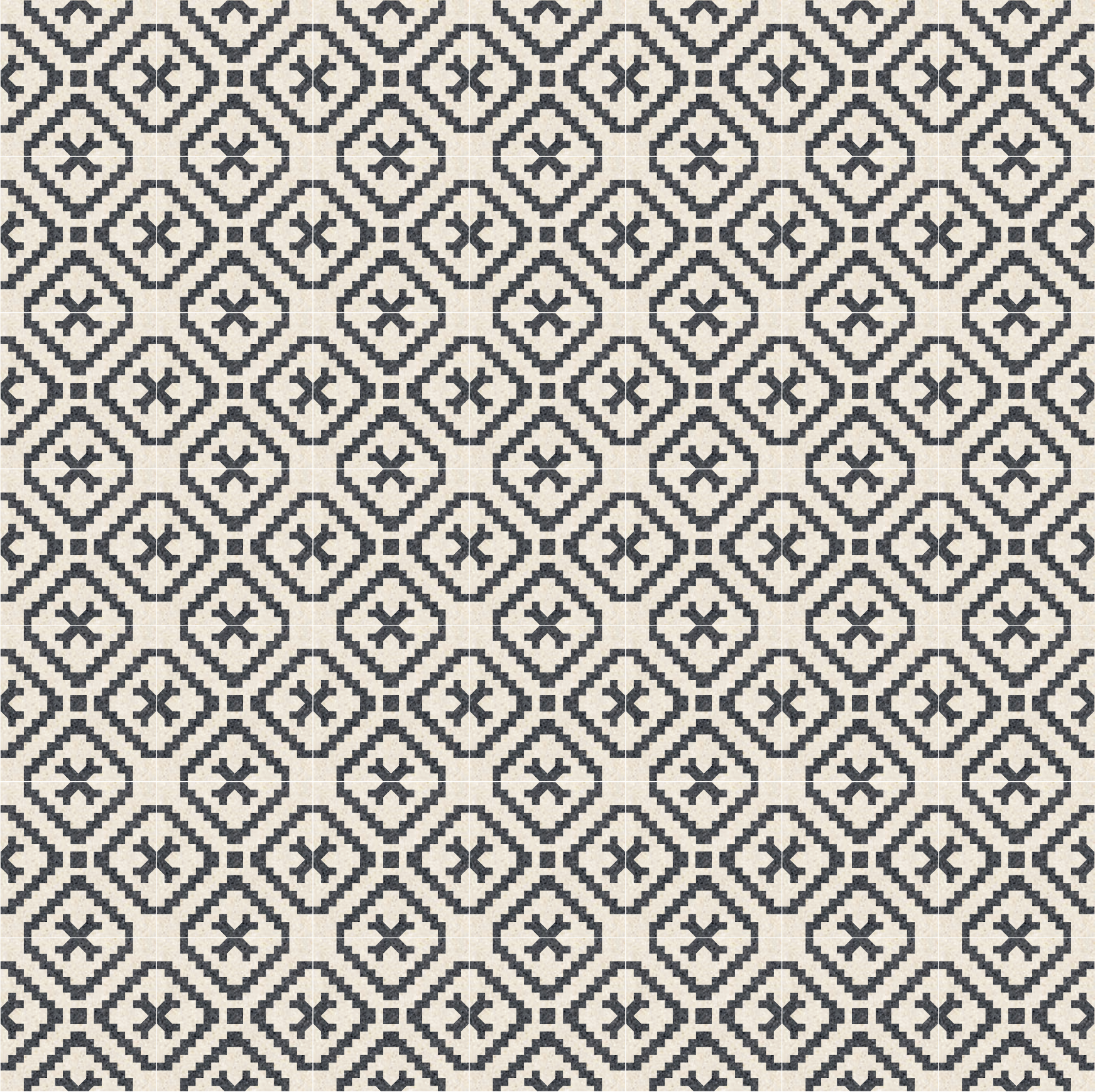






**ISABELA**  
tortora, bianco cristallo, ginger, pacifico, lava, amazzonia

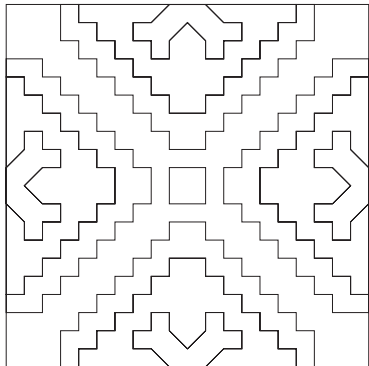




PUERTO RICO  
collezione decori ricerca  
*research decorations' collection*

# LOIZA

32  
33



dimensione / size  
20x20 cm

colori / colours  
avorio, lava

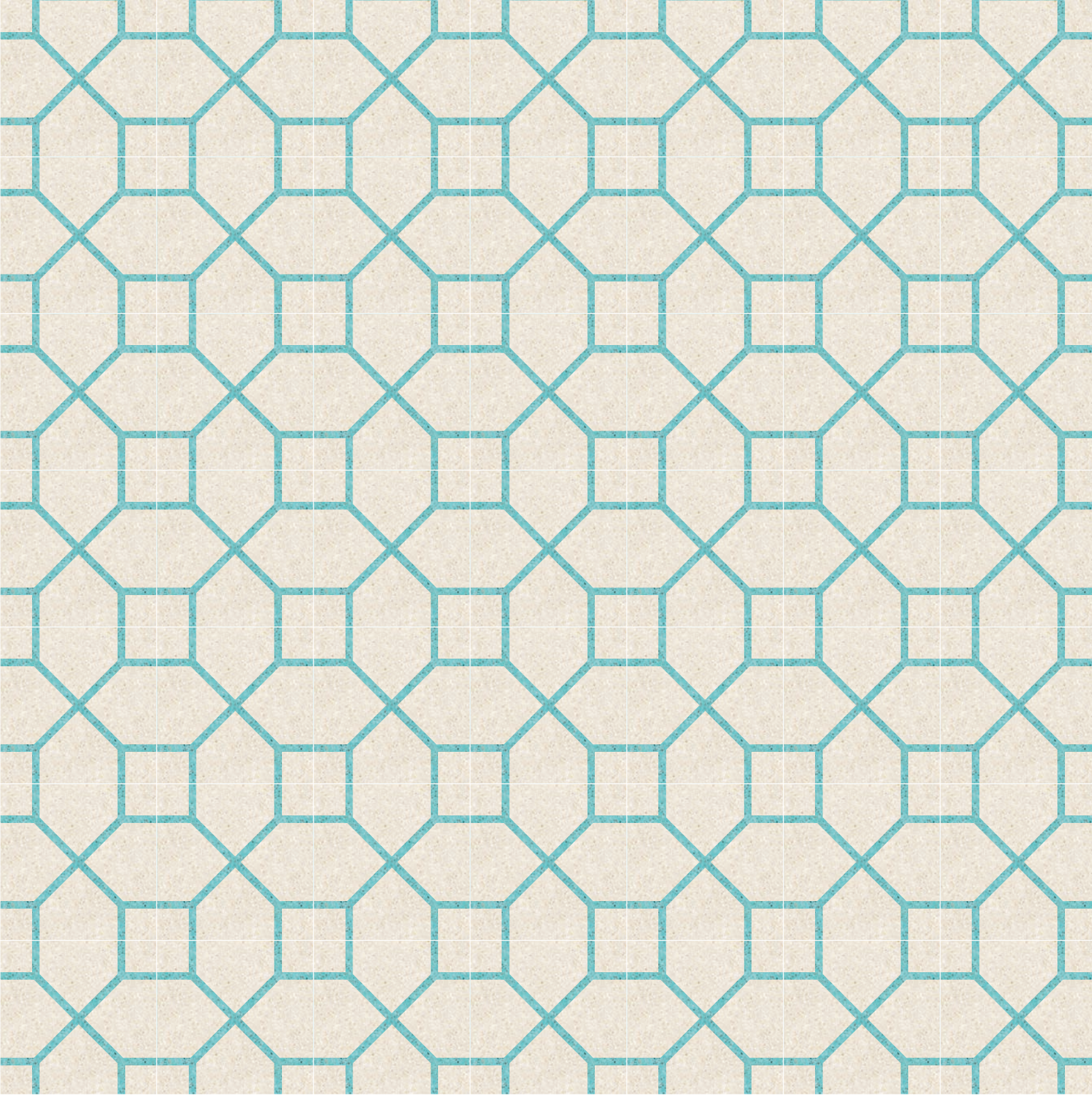






LOIZA  
avorio, lava

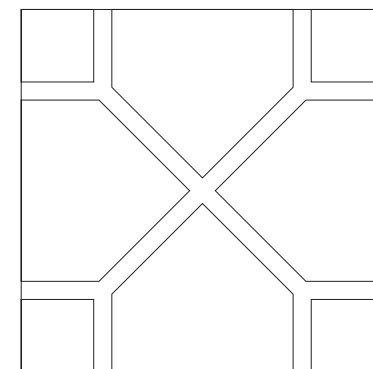




PUERTO RICO  
collezione decori ricerca  
*research decorations' collection*

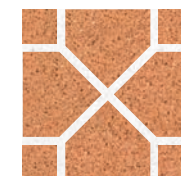
# MAYAGUEZ

36  
37



dimensione / size  
20x20 cm

colori / colours  
avorio, pacifico

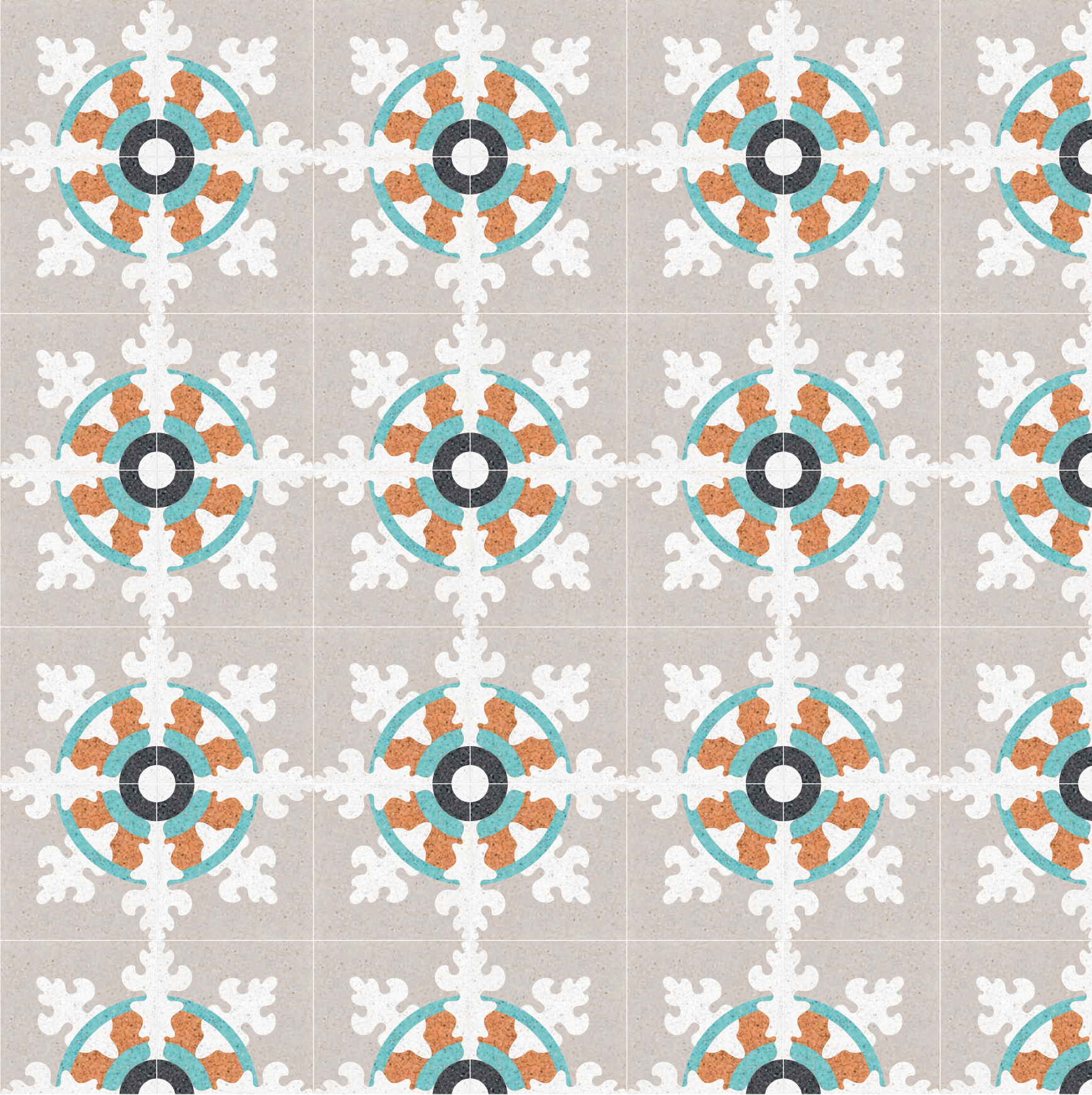






**MAYAGUEZ**  
bianco cristallo, lava, polvere, giallo oro, pacifico

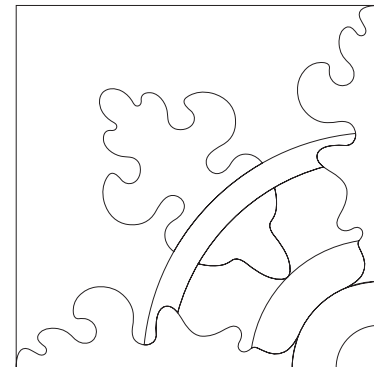




PUERTO RICO  
collezione decori ricerca  
research decorations' collection

# PARGUERA

40  
41



dimensione / size  
20x20 cm

colori / colours  
tortora, lava, pacifico, bianco cristallo, ginger

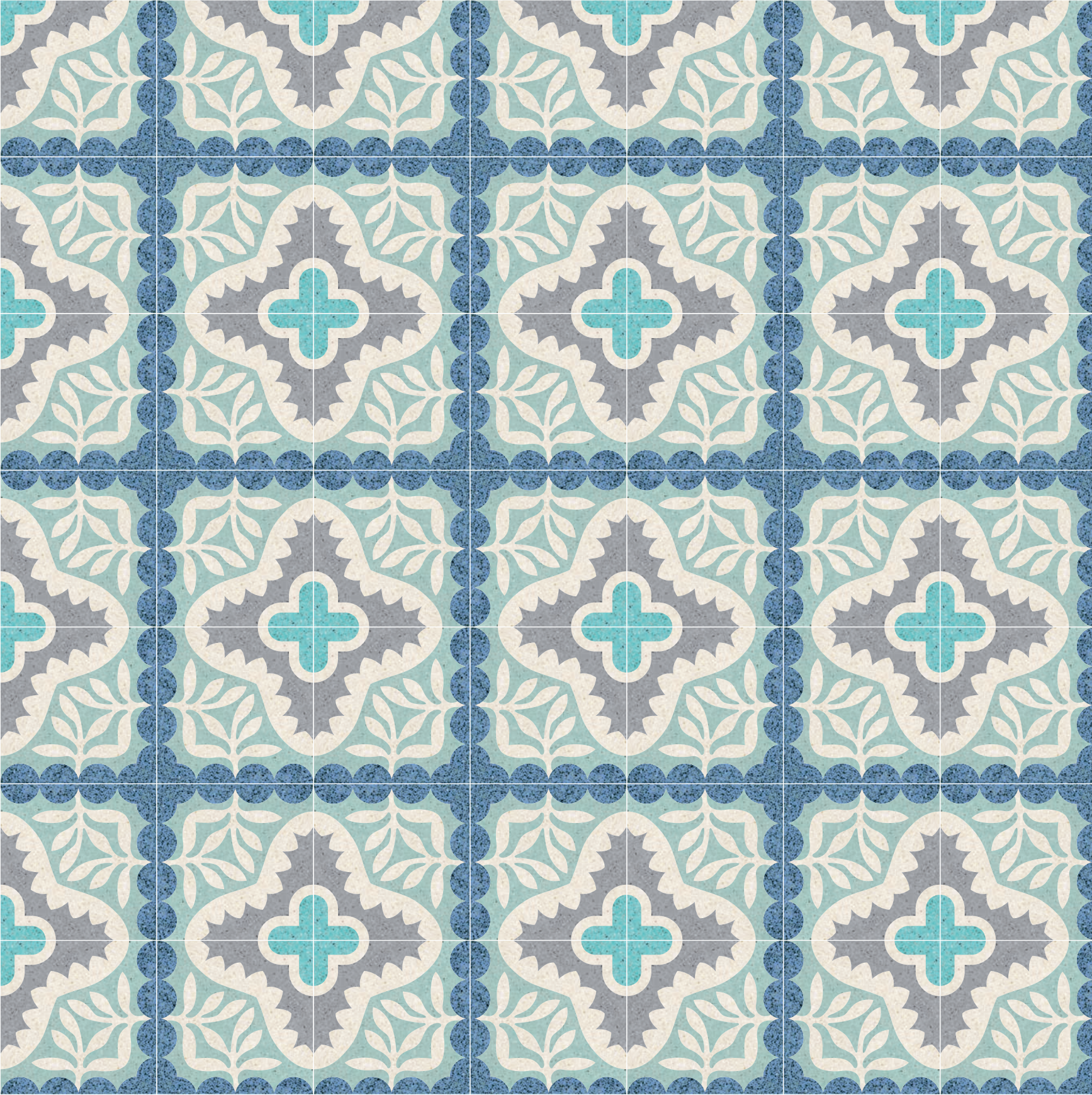






**PARGUERA**  
tortora, bianco cristallo, pacifico, ginger, lava

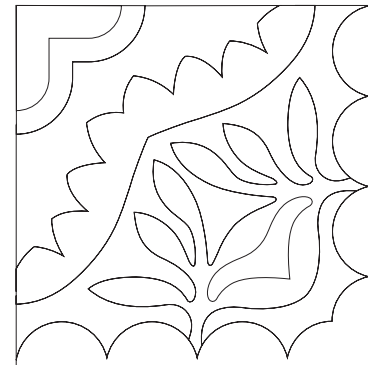




PUERTO RICO  
collezione decori ricerca  
research decorations' collection

# PENUELAS

44  
45



dimensione / size  
20x20 cm

colori / colours  
avorio, grisaglia, blue jeans, menta, pacifico

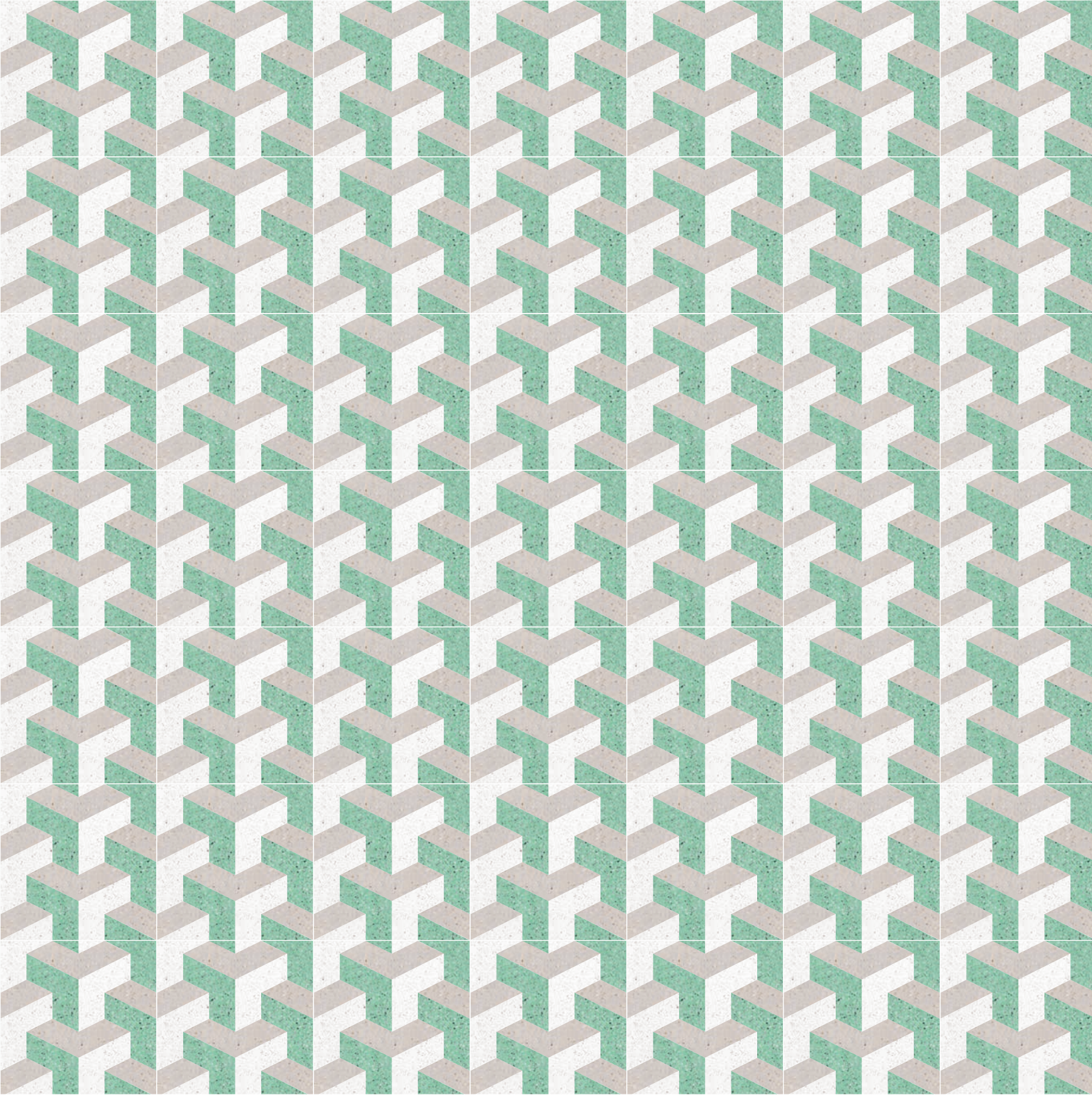






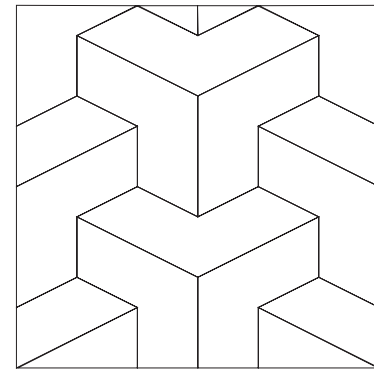
**PENUELAS**  
pacífico, avorio, verde bosco, carta da zucchero, kiwi





PUERTO RICO  
collezione decori ricerca  
research decorations' collection

# PONCE



dimensione / size  
20x20 cm

colori / colours  
bianco cristallo, tortora, amazzonia

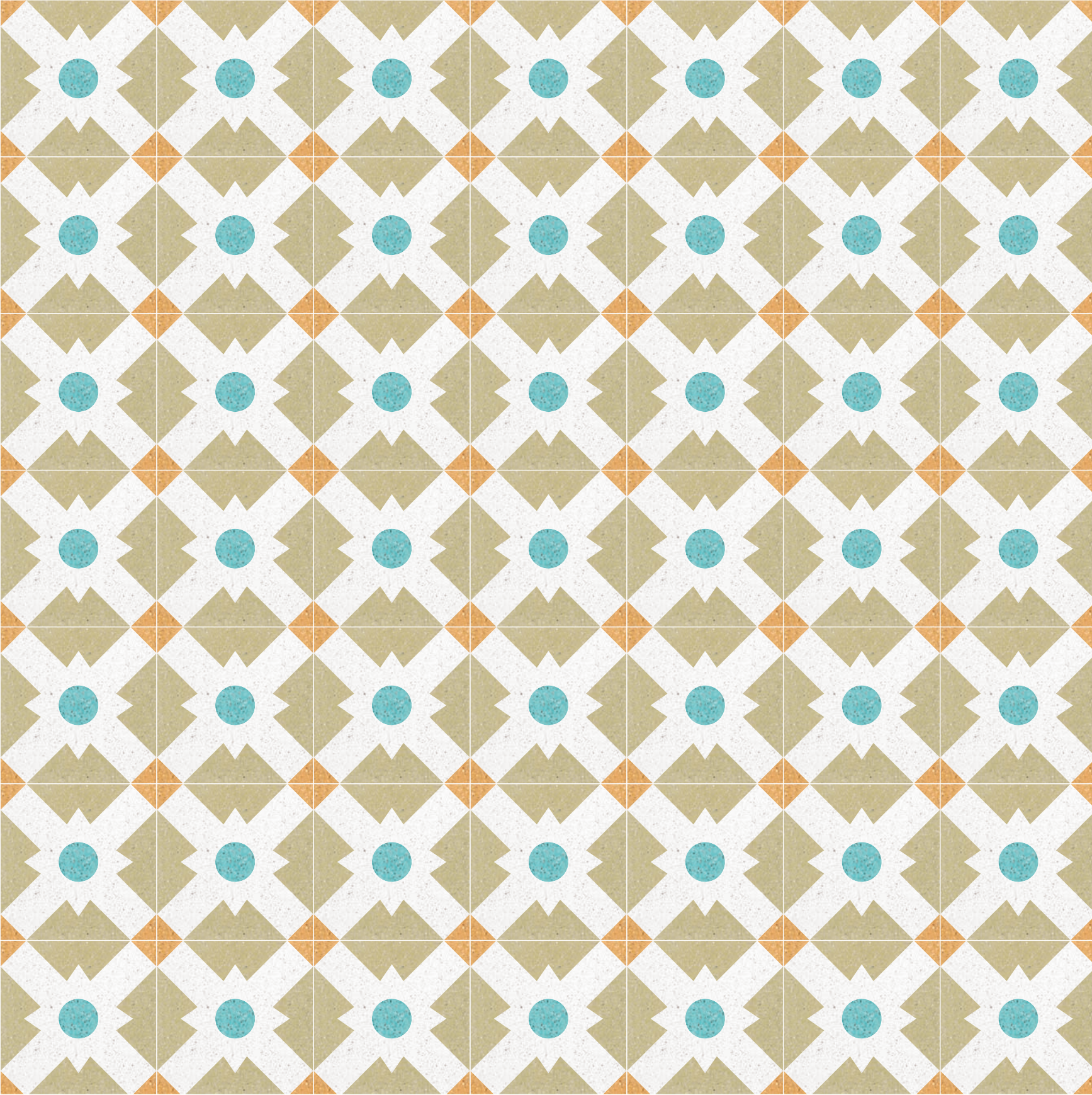






**PONCE**  
bianco cristallo, grisaglia, grigio argento

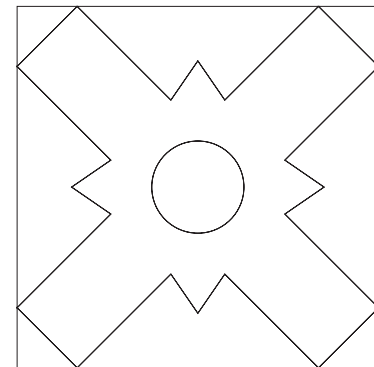




PUERTO RICO  
collezione decori ricerca  
research decorations' collection

# SAN JUAN

52  
53

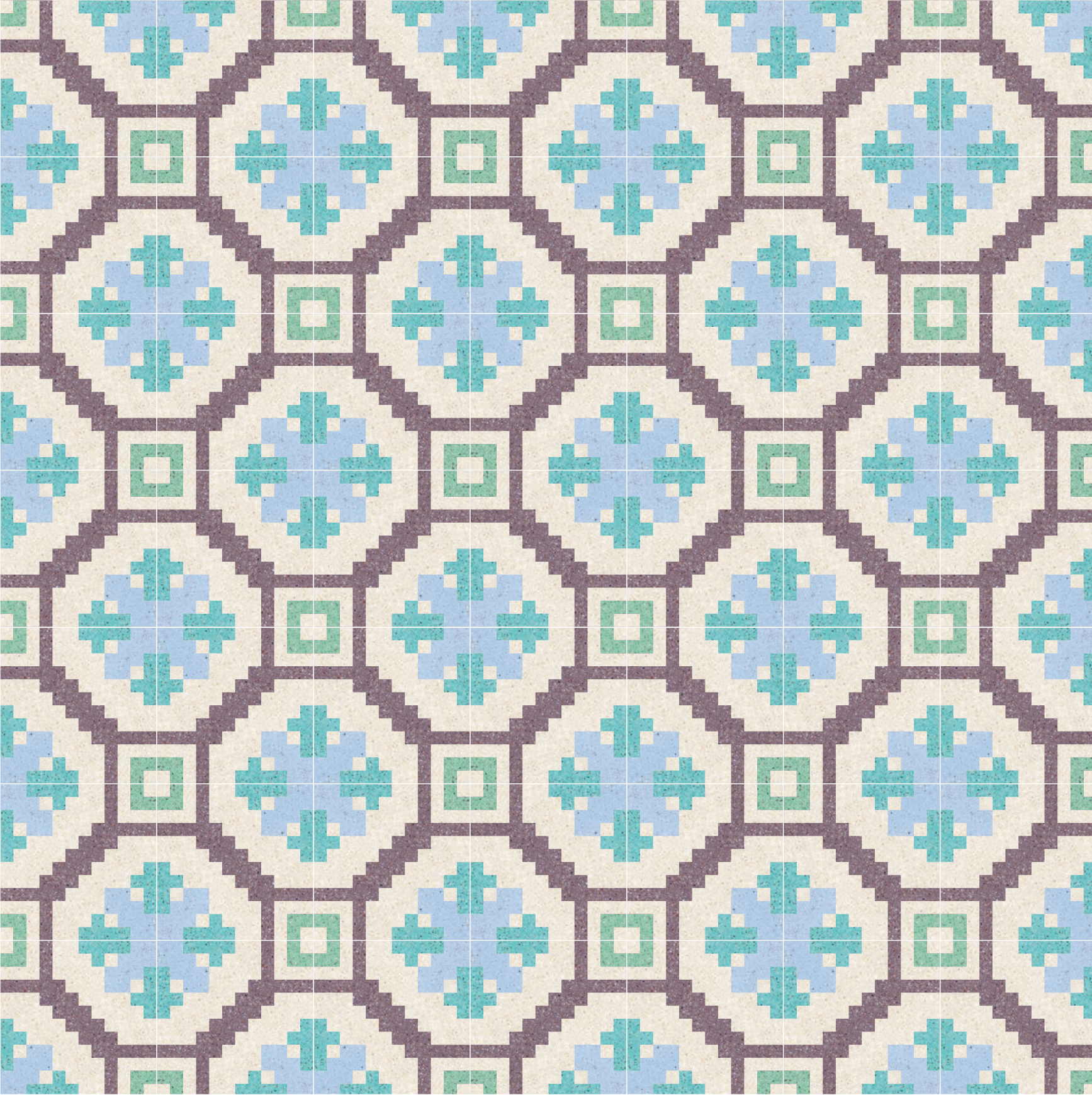


dimensione / size  
20x20 cm

colori / colours  
kiwi, bianco cristallo, pacifico, giallo oro



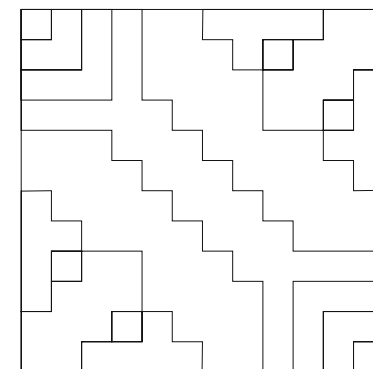




PUERTO RICO  
collezione decori ricerca  
*research decorations' collection*

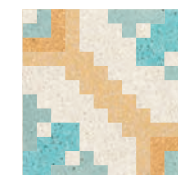
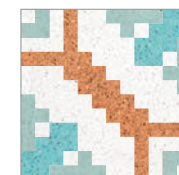
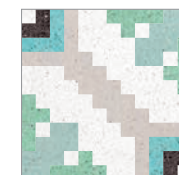
# YABUCOA

54  
55



dimensione / size  
20x20 cm

colori / colours  
melanzana, amazzonia, pacifico, turchino, avorio

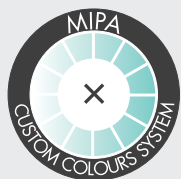






**YABUCOA**  
avorio, menta, giallo oro, grano, pacifico





La gamma dei colori MIPA vi dà la possibilità di cambiare l'anima ad ogni decoro. Un colore può definire uno stile, un'atmosfera ma anche condizionare il contesto di un ambiente rendendolo contemporaneo o tradizionale.

Per questo abbiamo sviluppato uno strumento che vi dà la possibilità di progettare direttamente online ([www.customcoloursystem.it](http://www.customcoloursystem.it)).

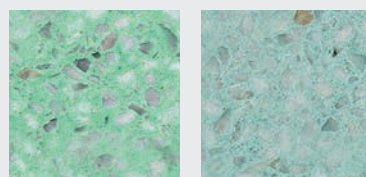
*MIPA's range of colours gives you a chance to change the soul of every decoration. A colour can define a style, an ambience, but also influence the context to make it either contemporary or traditional.*

*This is why we developed a tool you can use to make your designs directly online ([www.customcoloursystem.it](http://www.customcoloursystem.it)).*

### SOLO PER DECORI ONLY FOR DECORATIONS

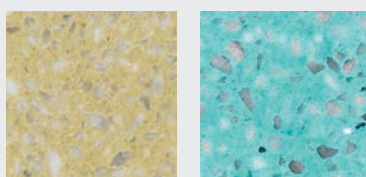
Per la collezione Puerto Rico sono stati creati nuovi colori, che potranno essere utilizzati con tutti i decori delle collezioni MIPA.

*New colours were developed for the Puerto Rico collection, which may be used with all decorative solutions in the MIPA collections.*



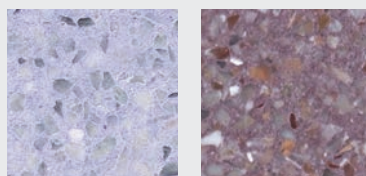
Amazonia

Menta



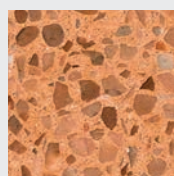
Kiwi

Pacifico



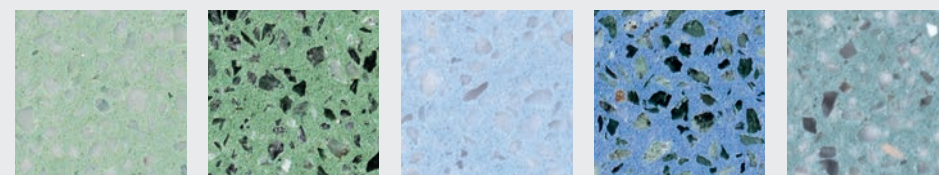
Malva

Melanzana



Ginger

### PER DECORI E TINTE UNITE FOR DECORATIONS AND SOLID COLOURS



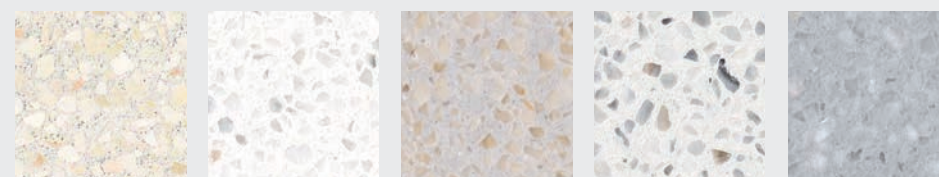
Acqua marina

Verde bosco

Turchino

Blue jeans

Carta da zucchero



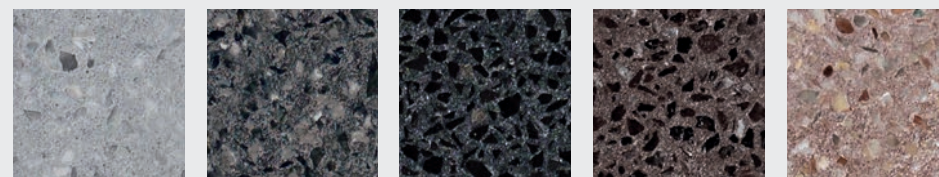
Avorio

Bianco cristallo

Tortora

Grigio argento

Polvere



Grisaglia

Lava

Nero intenso

Wengè

Terra



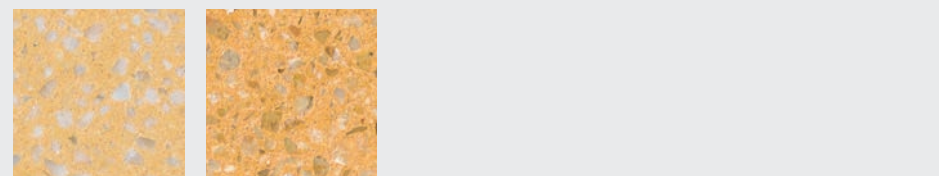
Cipria

Pelle d'angelo

Rosa antico

Ruggine

Rosso Pompei



Grano

Giallo oro





**FORMATO**  
**FORMAT**

20x20 cm



dimensione / size  
20x20 cm

spessore / thickness  
11 mm / 12,5±0,5 mm

finitura / finish  
Classic, Light Lux, Light Mat,  
Light Bloom

**CLASSIC**

Formella in graniglia monostrato 20x20 cm prelevigata (finitura grana 120) da lucidare in opera con bordi non bisellati. Spessore 12,5±0,5 mm.

*12,5±0,5 mm thick through body marble Graniglia tile 20x20, semi polished, to be polished after laying with unchamfered edges.*

**LIGHT LUX**

Formella in graniglia monostrato 20x20 cm spessore 11 mm, calibrata, rettificata. Bordi bisellati e superficie lucida.

*11 mm thick through body marble Graniglia tile 20x20, calibrated, rectified. Chamfered edges and polished surface.*

**LIGHT MAT**

Formella in graniglia monostrato 20x20 cm spessore 11 mm, calibrata, rettificata. Bordi bisellati e superficie levigata MAT.

*11 mm thick through body marble Graniglia tile 20x20, calibrated, rectified. Chamfered edges and mat surface.*

**LIGHT BLOOM**

Formella in graniglia monostrato 20x20 cm spessore 11 mm, calibrata, rettificata. Superficie spazzolata.

*11 mm thick through body marble Graniglia tile 20x20, calibrated, rectified. Brushed surface.*

**ROCK'N' ROLL**

Formella in graniglia monostrato 10x10 cm spessore 11 mm. Anticata artigianalmente.

*11 mm thick through body marble Graniglia tile 10x10. Antiqued handcrafted.*

**FINTURE**  
**FINISHES**

60  
61

**FORMATI**  
**E FINTURE**  
**FORMATS**  
**AND FINISHES**



TECNICA,  
ARTIGIANALITÀ  
QUALITÀ  
ARTISAN EXCELLENCE  
AND INDUSTRIAL  
QUALITY

Il sistema della produzione e del consumo sta cambiando sempre di più.

Si assiste ad un ritorno di un consumo legato alla capacità del prodotto di raccontare la propria storia. La storia della produzione, dei valori identitari e culturali, del lavoro che vi sono eticamente e socialmente collegati.

Questo è il vero significato di un'espressione abusata come **Made in Italy**: la ricerca di un fare autentico legato all'expertise artigianale eccellente con cui viene ideato e realizzato un prodotto.

Il suo valore di cultura materiale è legato alla capacità di sintetizzare con una visione estetica il lavoro sulle materie prime (naturali, all'80% marmo italiano pregiato selezionato, prelavato, depolverato, a granulometria scelta).

**MIPA**, protagonista della riscoperta e dell'evoluzione dei pavimenti e rivestimenti in graniglia di marmo, coniuga eccellenza artigianale con qualità industriale.

Le materie prime naturali e le lavorazioni eco-compatibili danno origine ad un prodotto artigianale ed unico, allo stesso tempo di altissime prestazioni, profondamente tecnologico e soprattutto realizzato interamente in Italia.

Una dimensione nuova ed esclusiva, una visione originale e distintiva trasformano la graniglia in un pezzo di design che arricchisce e valorizza gli ambienti.

*Production and consumption systems are changing increasingly.*

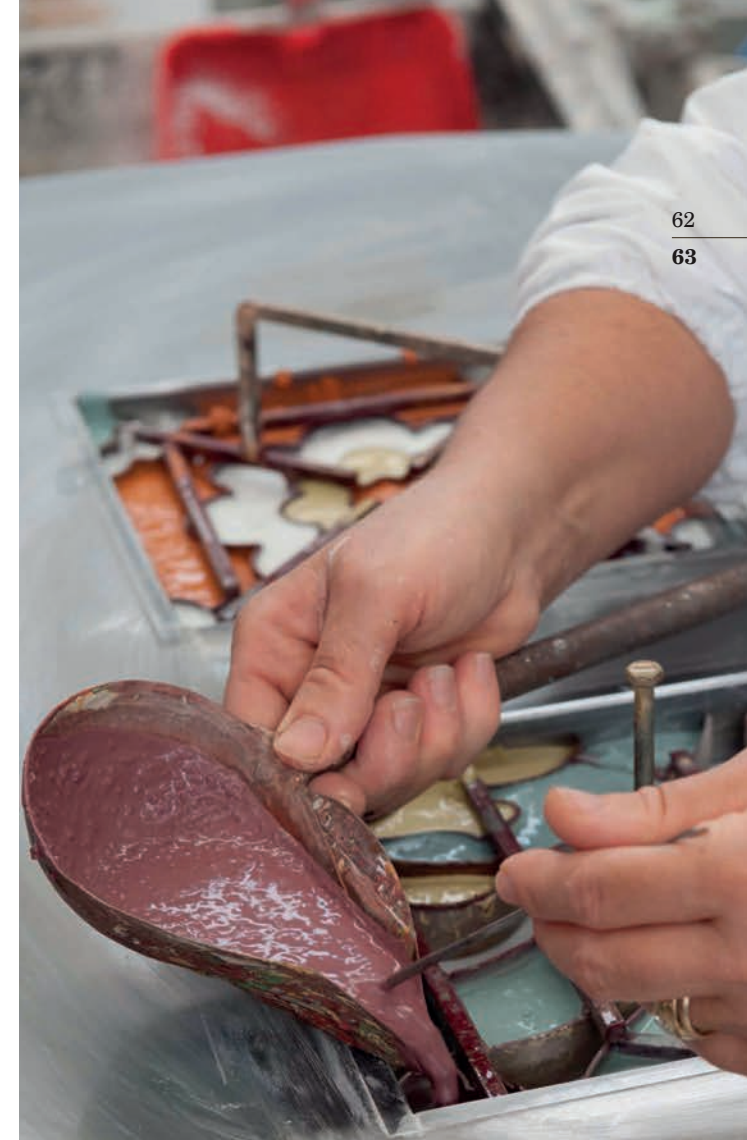
*There is a resumption of consumption connected to a product's ability to tell its own story, i.e. the history of production and the relevant identity, cultural and work values playing a role both ethically and socially.*

*This is the true meaning of an expression like "Made in Italy", which has often been overexploited, i.e. the search for an authentic approach to excellent artisan skills aimed at designing and manufacturing products. Material cultural values derive from the ability to add aesthetic value by processing raw materials (natural materials, i.e. 80% precious and selected, pre-washed, dusted, marble with selected granulometry).*

*MIPA, a protagonist in the rediscovery of marble Graniglia tiles for floors and wall coverings, combines artisan excellence and industrial quality.*

*Natural raw materials and environmentally-friendly processing produce unique top-performance handicrafts products with high tech-contents fully produced in Italy.*

*It is a new and exclusive dimension, an original and distinctive vision that turns marble Graniglia tiles into design products enriching and enhancing any environment.*



62

63

 MIPA







10 NEW MAPLE AVE. SUITE 307  
PINE BROOK, NJ 07058

[www.thestoneproject.net](http://www.thestoneproject.net)